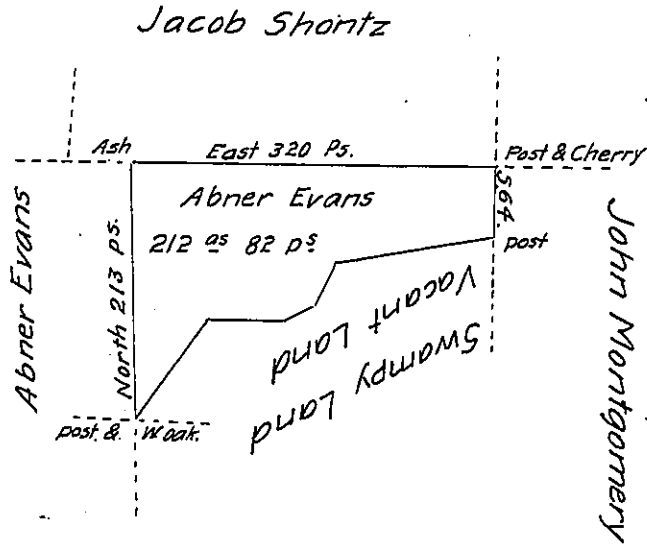


Whole Courses & Distances  
Beginning at a Post & Cherry

- South 69 ps. to post.
- 581° West 147 " to maple
- 528° W 40 " to W. Oak.
- 568° W 32 " to W. Oak.
- West 63 " to Hemlock
- 539° W 102 " to post. & W. Oak.
- North 213 " to ash
- East 320 " to Begin?



In pursuance of a warrant for 200 acres of land dated the 25<sup>th</sup> day of September 1810 was surveyed on the 15<sup>th</sup> day of October 1810 for Abner Evans, the above described tract of land containing 212 acres and 82 perches, and allowance of six p<sup>c</sup> cent for roads &c<sup>a</sup>. Situate near the outlet of Coneaut Leake, in Sadsbury Township and Crawford County.

Interest from firts of June 1800 }

Jacob Herrington D<sup>y</sup> Su<sup>r</sup>.

To Andrew Porter Esq<sup>r</sup>.

Surveyor Gne!

IN TESTIMONY that the above is a copy of the original remaining on file in the Department of Internal Affairs of Pennsylvania, made conformably to an Act of Assembly approved the 16th day of February, 1833, I have hereunto set my Hand and caused the Seal of said Department to be affixed at Harrisburg, this twenty second day of August 1904

*Loach R. Brown*  
Secretary of Internal Affairs.